

BRUNTON

RESIDENTIAL



ABBEY MEADOWS, MORPETH

£1,550 Per Month

BRUNTON

RESIDENTIAL





BRUNTON

RESIDENTIAL



BRUNTON

RESIDENTIAL



Nestled in the charming area of Abbey Meadows, Morpeth, this delightful detached house is now available for rent at £1,550pcm. Offering a perfect blend of comfort and convenience, this property features three well-proportioned bedrooms, making it an ideal home for families or professionals seeking extra space.

Upon entering, you are welcomed into a spacious reception room that provides a warm and inviting atmosphere, perfect for both relaxation and entertaining guests. The property also boasts a well-appointed bathroom, ensuring that all your daily needs are met with ease.

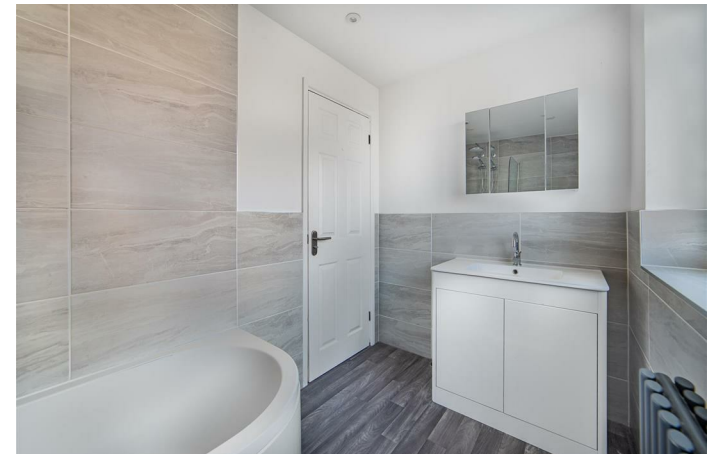
Set on a generous corner plot, this home benefits from ample outdoor space, allowing for potential gardening or simply enjoying the fresh air. The driveway provides convenient off-street parking, a valuable asset in today's busy world.

Partially furnished, this property offers the flexibility to add your personal touch and style, making it truly feel like home. With its prime location in Morpeth, residents can enjoy the tranquility of suburban living while still being within easy reach of local amenities, schools, and transport links.

This property is available for immediate occupancy, making it an excellent opportunity for those looking to move quickly. Do not miss the chance to make this lovely house your new home in Abbey Meadows.

BRUNTON

RESIDENTIAL



BRUNTON

RESIDENTIAL



BRUNTON

RESIDENTIAL

TENURE :

LOCAL AUTHORITY :

COUNCIL TAX BAND :

EPC RATING : E

